



Ethos to GO!

W/C 10/01/22 no 41

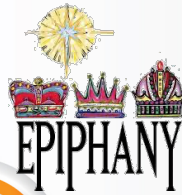
This Week's Idea

Epiphany



This Week's Bible Verse

"We saw his star in the east and have come to worship him."



Matthew 2:2



Let's Ponder!



- * This week we are looking at the season of Epiphany.
- * Watch the video on the blog. St James children have produced a fantastic video this for this week, looking at the importance of Epiphany.
- * What, if anything, does the time of Epiphany mean to you?
- * Why is it so important for Christians to have this season of Epiphany?
- * Why do you think the visitors to Jesus are known as Magi or Wise Men?
- * What does Epiphany mean?
- * What do the 3 gifts symbolise?
- * Why is the visit of the Three Wise Men important to Christians?
- * Use your window, door and mirror key rings to reflect on not giving up. How do you feel now? What have you discovered? What will you take away from this week's Ethos to Go?



This Week's Prayer



NEW YEAR PRAYER:

Thank You Lord for giving me
The brand new year ahead.
Help me live the way I should
As each new day I tread.
Give me gentle wisdom
That I might help a friend,
Give me strength and courage
So a shoulder I might lend.
The year ahead is empty,
Help me fill it with good things
Each new day filled with joy
And happiness it brings.
Amen.

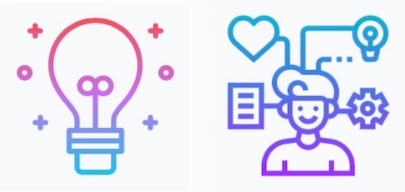
Epiphany Prayer

Lord Jesus, may your light shine our way,
as once it guided the steps of the magi:
that we too may be led into your presence
and worship you, the Child of Mary,
the Word of the Father, the King of nations,
the Saviour of mankind;
to whom be the glory for ever.

Amen



This Week's Activity **Advent**



Watch the video, St James have produced a fantastic video for this week's post. Use your mirror, window and door key rings to explore the questions. Just as the Wise Men brought baby Jesus gifts on Epiphany, we too are called to give Jesus gifts. These gifts can be small sacrifices, kindness to others, service to others, and much more! Decorate the gift box sheet and draw your gift inside. On the lines below, explain your gift in more detail and why you have chosen to give it to Jesus this year.

Blog Post- This week's blog post is related to the season of Epiphany. Please leave your individual or class responses. Refer to the questions on page one of this resource card?

www.ethosatboltonandfarnworthtrust.org



Ethos At Home

Activities you can do at home this week!

Epiphany Crossword

You will need - Pens.

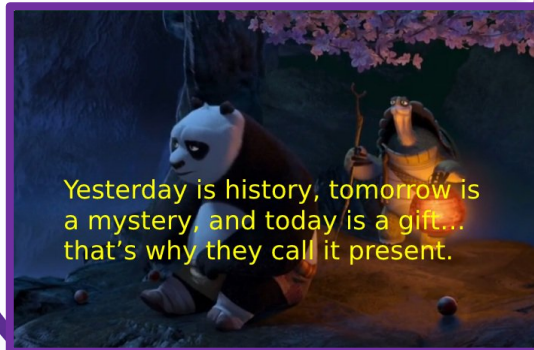
Activity – The aim of this activity is to reflect on the season of Epiphany.

Epiphany

s c v g w f h g e r g a
 m a g i g o b v f d o s
 h j y f e r r v a c l x
 k j j t g h v s f d d a
 i e o s r r t t h a q a
 d s m f g h j a y i j w
 k u n y b c h r j n p i
 d s a c r v g b h b b s
 y u o i k r k m l j n e
 h d c v b a h d f g h m
 f r a n k i n c e n s e
 e r v a d c a m e l s n

Wise Men	gold
Magi	frankincense
Jesus	myrrh
worship	camels
gifts	star

Quote of the Week



Yesterday is history, tomorrow is a mystery, and today is a gift... that's why they call it present.



Have Fun!



The Bolton & Farnworth CofE Primary Multi Academy Trust
 Together With God

